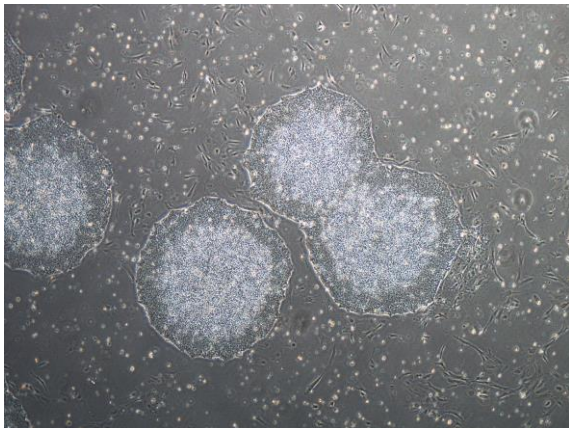
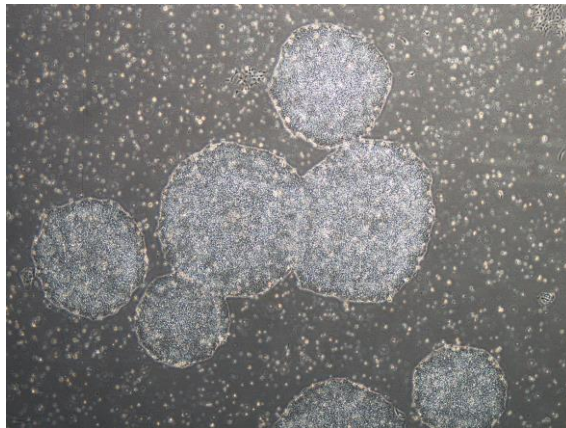


【 CiRA-j-1025 】 Morphology of iPSC colonies

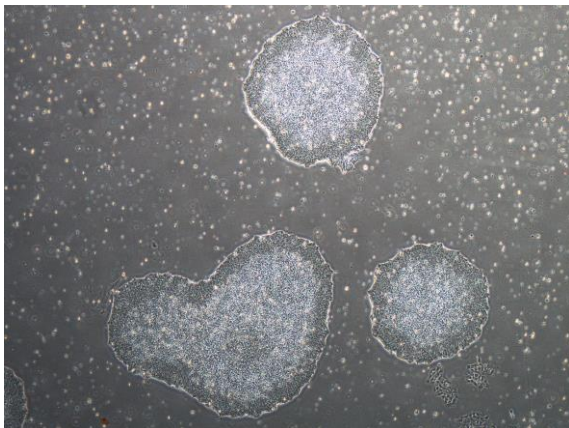
CiRA-j-1025-A: passage-2



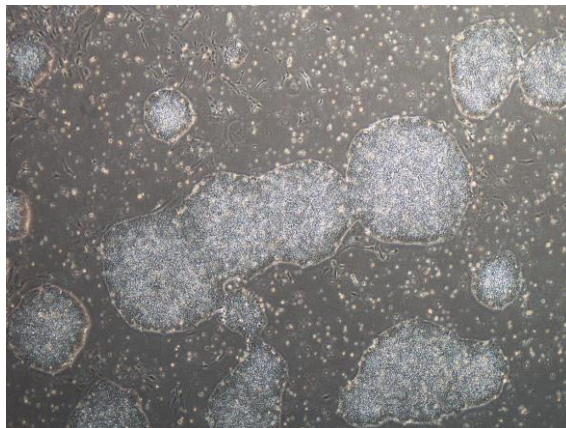
CiRA-j-1025-B: passage-2



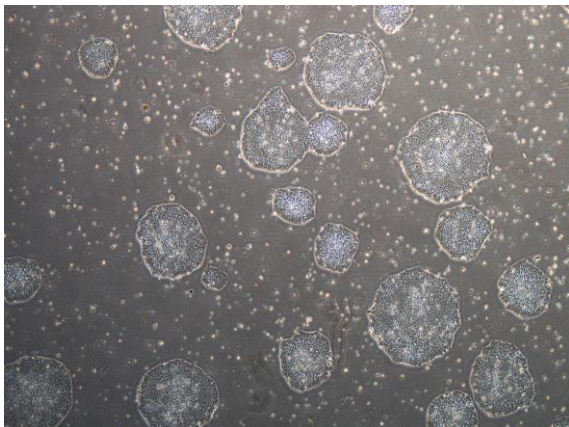
CiRA-j-1025-C: passage-2



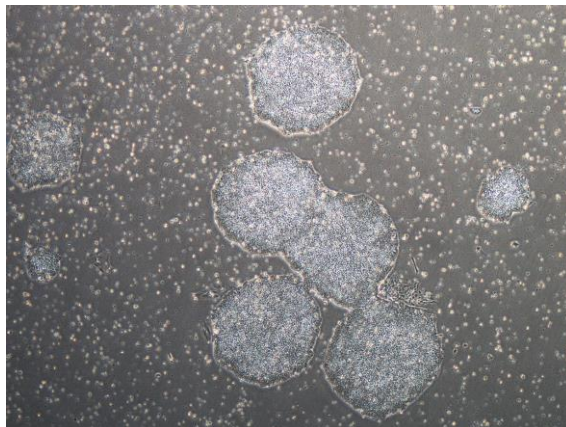
CiRA-j-1025-D: passage-2



CiRA-j-1025-E: passage-2



CiRA-j-1025-F: passage-2



(All images were captured at 4x magnification)